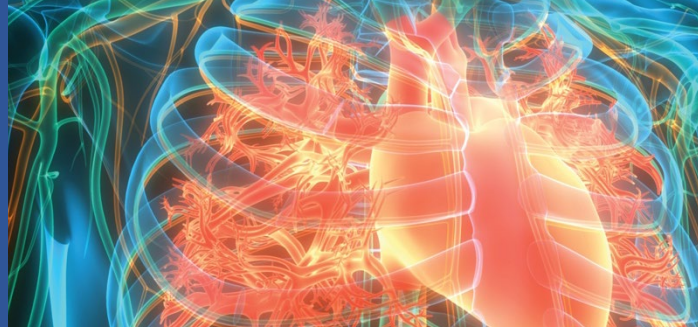


13TH ANNUAL

Interventional Cardiology Symposium: *The Intersection of Aging & Cardiovascular Disease*



AGENDA *subject to change*

- 7:00 AM Registration and Continental Breakfast
- 7:50 AM Welcome and Opening Remarks
- 8:00 AM Yale New Haven Health System Heart and Vascular Center Overview

SESSION I: CORONARY SESSION

Moderators/Panelists: *TBD*

- 8:20 AM Challenging Chronic Coronary Case Presentation of Older Adults from the Yale Interventional Fellows
- 8:35 AM Diagnostic Testing Considerations for CAD in Older Adults
- 8:50 AM Older & Wiser: Management of Chronic Coronary Syndromes in Older Adults post-ORBITA
- 9:05 AM Innovations in Medical Therapy: Novel Lipid Lowering, Anti-Inflammatory, Cardiometabolics, and Beyond
- 9:25 AM Challenging Acute Coronary Syndrome Case Presentations of Older Adults from the Yale Interventional Fellows
- 9:40 AM STEMI Management and Complete Revascularization in Older Adults Post-FIRE-Timing, Complexity, and Special Considerations
- 9:55 AM Refreshment Break
- 10:10 AM Intravascular Imaging Considerations in the Geriatric Population
- 10:25 AM Geriatric Reflections for Complex/High Risk PCI
- 10:45 AM Effects of Aging on the Coronary Microcirculation and its Influence on Invasive and Non-Invasive Functional Assessment.
- 11:00 AM Keynote Presentation
- 12:00 PM Lunch

SESSION II: PERIPHERAL VASCULAR, STRUCTURAL, & NON-CORONARY INTERVENTIONS

Moderators/Panelists: *TBD*

- 1:00 PM Case Presentation: Vascular Access Barriers and Solutions in the Older Patient
- 1:15 AM PAD Challenges & Opportunities in the Elderly
- 1:30 PM Danger Shock: How Old is Too Old in Cardiogenic Shock?
- 1:45 PM TAVR across the Age Spectrum: What are the Limits?
- 2:00 PM Innovations in Structural Heart Disease and Applications for Older Adults
- 2:15 PM Refreshment Break

SESSION III: A Geriatric Approach to Older Adults with CVD: Debate Session

Moderators/Panelists: *TBD*

- 2:30 PM The Invasive Versus Conservative Strategy in Older Adults with NSTEMI
 - Pro Invasive
 - Con Invasive
 - Questions
- 2:45 PM What Matters Most as We Age? “Hard” Outcomes versus Quality of Life as Clinical Trial Endpoints to Inform Shared Decisions in Older Adults
 - Pro MACE
 - Pro QoL
 - Questions
- 3:00 PM Closing Remarks